

## SECTION 2.0 - SITE & CONTEXT

### Site Topography



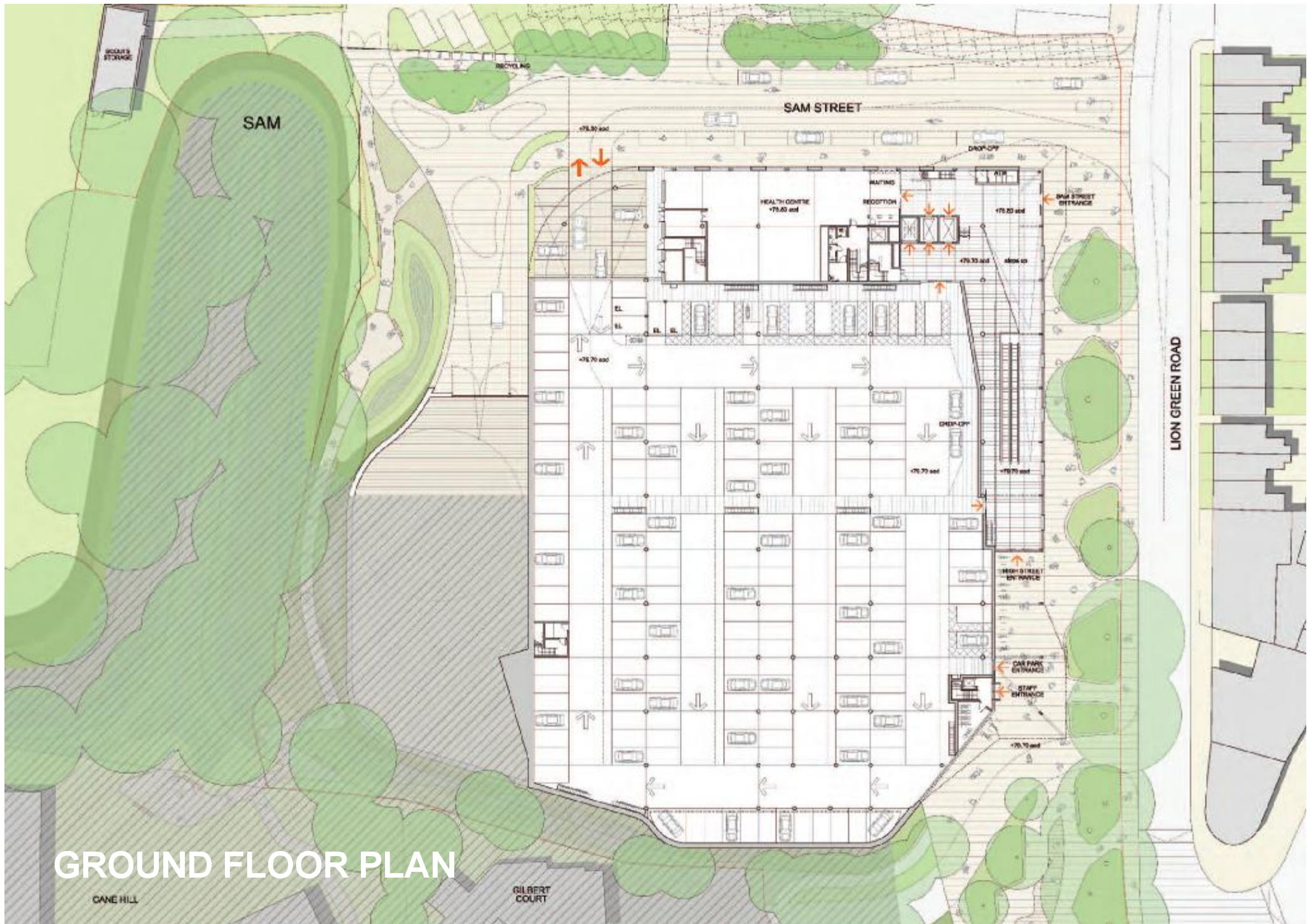
View within the site towards North

There is a very significant change in level across the site of approximately 6m. This means that to avoid excessive excavation design solutions must carefully consider how proposals work with natural landform.

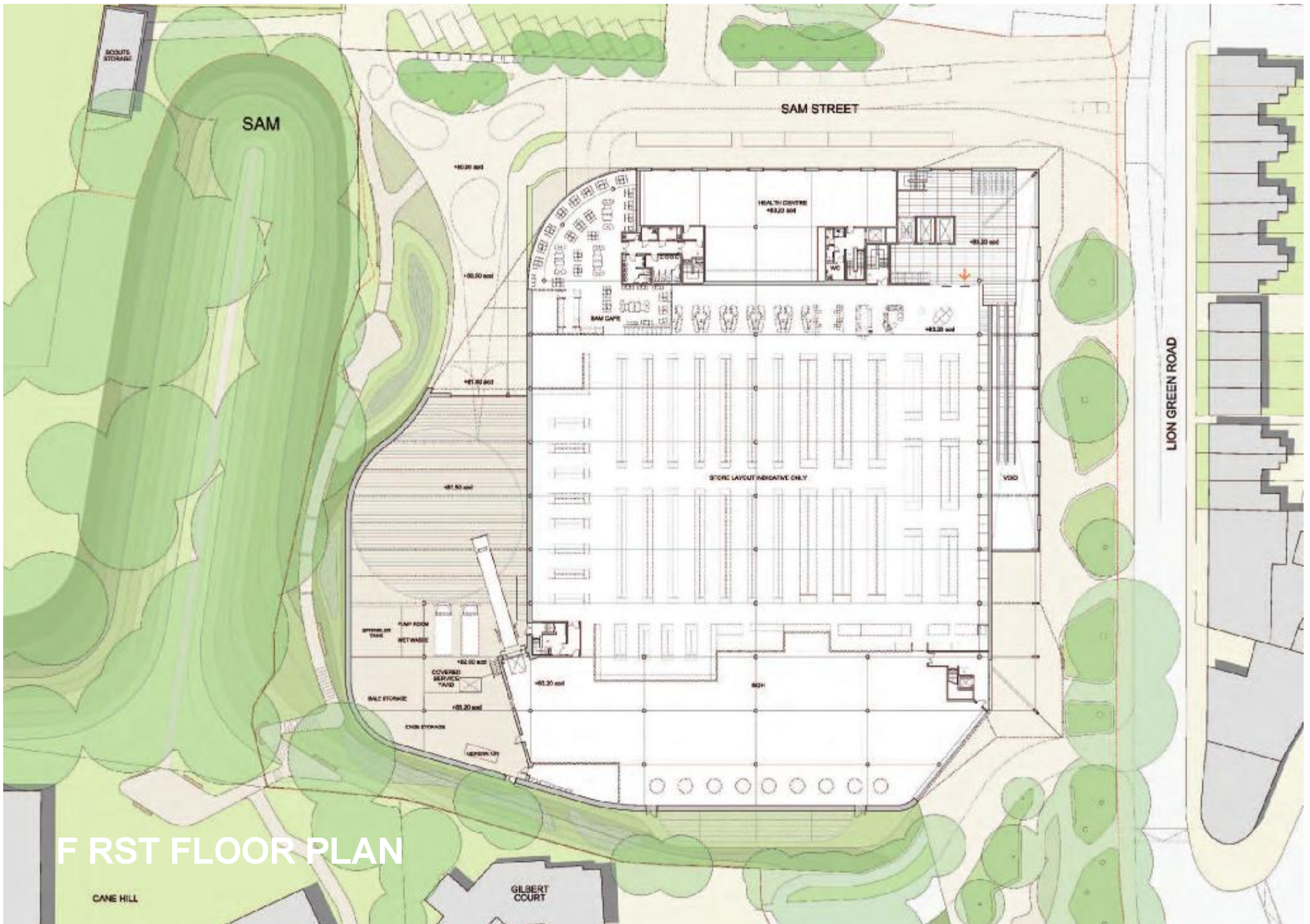
The principle frontage of the site on Lion Green Road has a level change of approximately 1m. This impacts on entrance locations and reinforces the need for a unique design solution.



Contour Plan



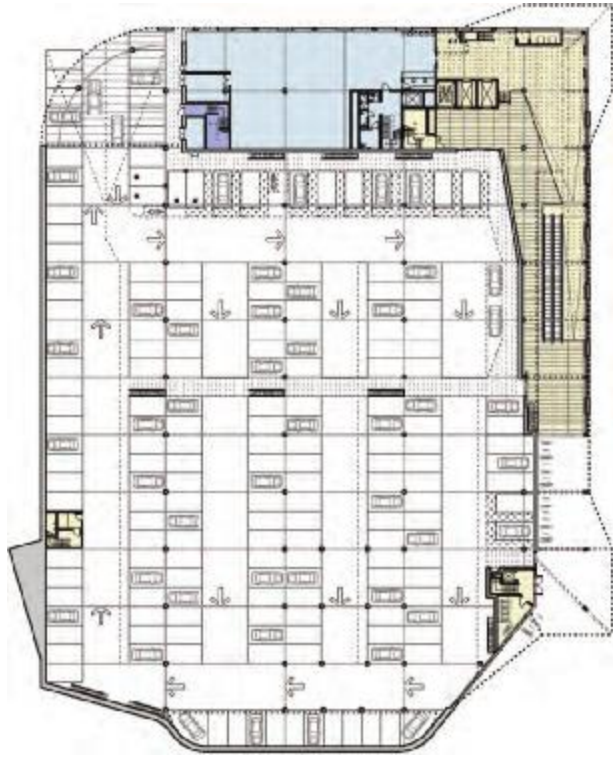
# GROUND FLOOR PLAN



# FIRST FLOOR PLAN

## SECTION 7.0 - ACCOMMODATION

### Gross Internal Areas



Ground Floor Car Park - Lobby - Health Centre

#### Health Facility

Ground Floor – 458.6sqm (GIA)

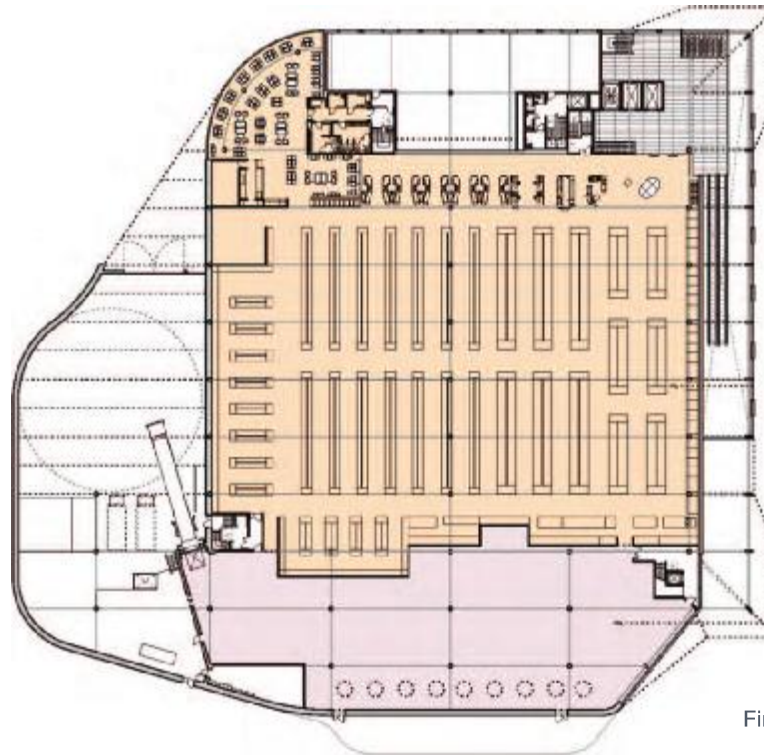
First Floor – 473.6sqm (GIA)

Total – 932sqm (GIA)

#### Food Store

First Floor – 4,679sqm (GIA)

Lobby/ vertical circulation space 1,144sqm (GIA)



First Floor - Food Store - Health Centre - Lobby